



The Savannah River Preserve: Protecting Forests, Wildlife and a Way of Life

Matt Nespeca
Conservation Land Company, Inc.

Noel Thorn
The Nature Conservancy



The Savannah River Preserve

- Landscape Condition
- Threats to rural lands on Savannah River
- Cooperative Land Protection
- Development of a landscape-level program
- Keys to Success
- Results to Date

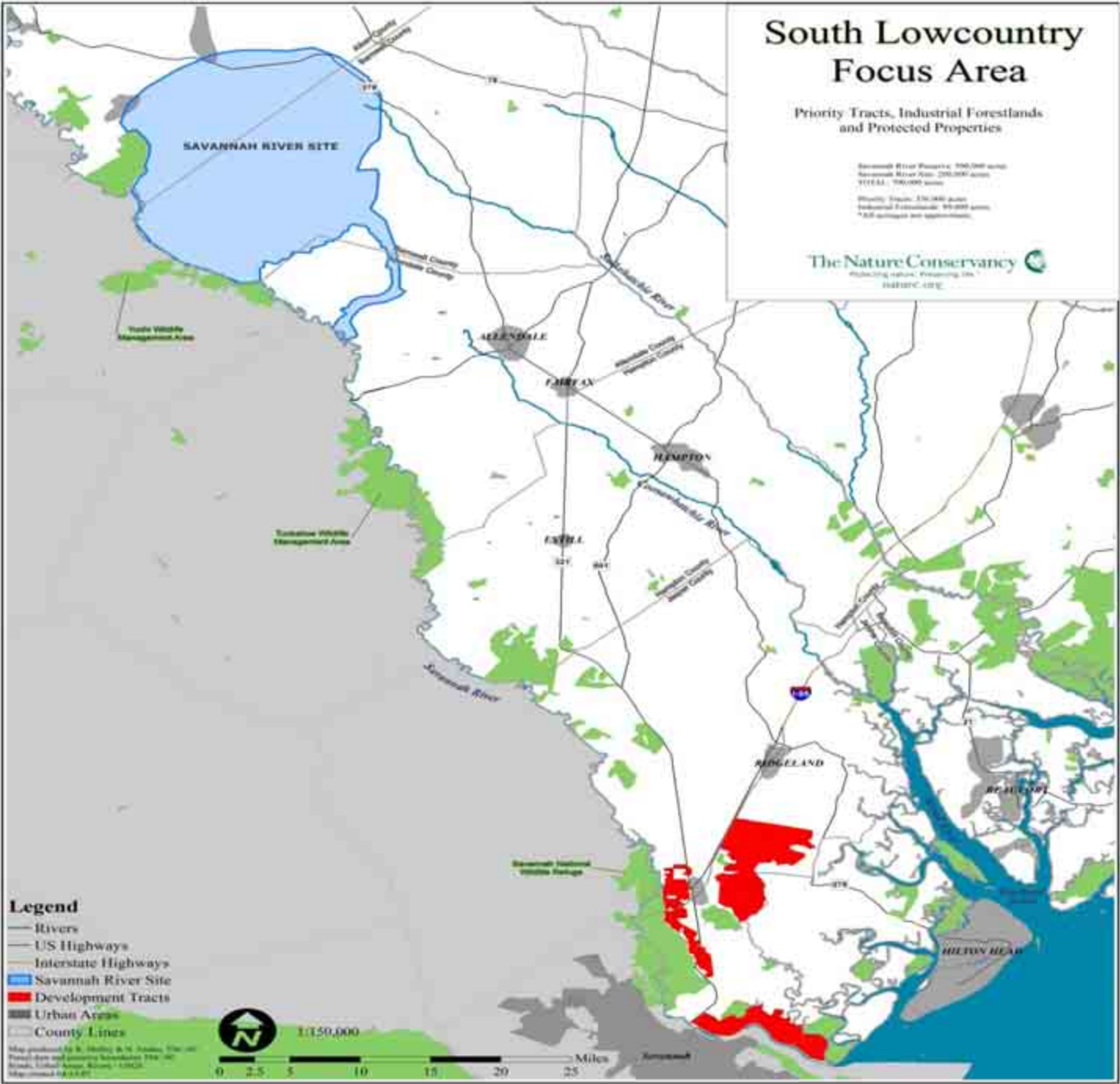
South Lowcountry Focus Area

Priority Tracts, Industrial Forestlands
and Protected Properties

Savannah River Property: 590,000 acres
Savannah River Park: 200,000 acres
TOTAL: 790,000 acres

Priority Tracts: 120,000 acres
Industrial Forestlands: 95,000 acres
* All numbers are approximate.

The Nature Conservancy
Protecting nature. Promoting life.
TNC.ORG



- Legend**
- Rivers
 - US Highways
 - Interstate Highways
 - Savannah River Site
 - Development Tracts
 - Urban Areas
 - County Lines

1:150,000

0 2.5 5 10 15 20 25 Miles

Map produced by R. Shelby & N. Franks, The Nature Conservancy and University of Georgia. Savannah River Park and Wildlife Refuge. © 2002. Map updated 06/2007.

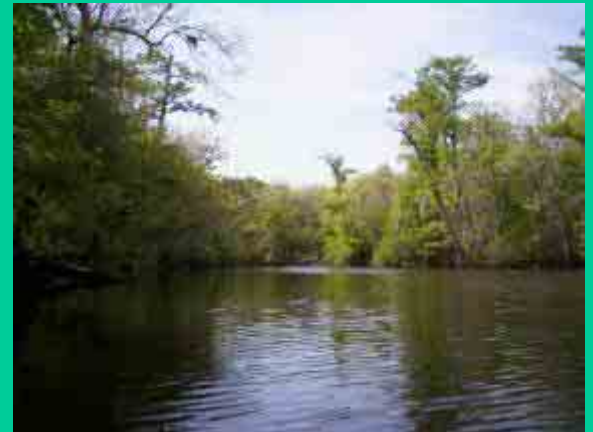


Current Landscape Condition

- Savannah River Preserve (~800,000 acres)
 - Portions of Hampton, Jasper, Allendale and Aiken Counties along South Carolina side of Savannah River
 - Upland and bottomland forests: ~75%
 - Grasslands: ~12%
 - Farmland: ~8%
 - Unproductive: ~4%
 - Urbanization: <1%

Current Landscape Condition

- Savannah River Preserve
 - Working forests and ag lands
 - Local cultural heritage and connection to the land





Threats to Rural Lands in the Savannah River Preserve

- Urbanization
 - Residential sprawl from coastal development
 - Tract fragmentation
 - Loss of prescribed burning
- Incompatible Management



Savannah River Preserve

- Started in early 2006
- Private lands conservation initiative
- Leadership by landowners
- Partnership support from land trusts and agencies:
 - The Nature Conservancy
 - Ducks Unlimited
 - Lowcountry Open Land Trust
 - SC DNR
 - USFWS
- “Greatest opportunity in South Carolina to implement landscape-level protection”



Savannah River Preserve

- The SRP Program
 - Bargain sale conservation easements
 - Developed by and for private landowners
 - Working forest easements
 - Landowner retains their ability to manage a property for forestry, wildlife, mixed agriculture.
 - Retains the way of life for private landowners
 - Protects landscape from fragmentation
 - Protects the water quality and quantity for the Savannah River
 - Supported by the SC Conservation Bank, with other potential funding sources



Savannah River Preserve

- The SRP Program
 - Standardized easement terms
 - Allowances for forestry and ag practice, limited subdivision of tracts, limitations on structures and impervious surface, etc.
 - Riverine buffers
 - Special conservation values are identified in the conservation easements
 - \$200/acre payment for easement
 - Because it is a bargain sale, there are potential tax benefits for landowners as well



Keys for Success

- Private landowner leadership
- Programmatic approach (all landowners are treated equally)
- Sustainable funding source
- Leveraged land protection
 - Bargain sale conservation easements
 - A little money, with large results
- Agreement among participating land trusts and partners



Savannah River Preserve

- The SRP Program To Date
 - Results
 - Over 35,600 acres of private protection in 2006 and 2007
 - Over 13,000 acres of private protection is expected in 2008
 - Landowner enthusiasm
 - Funding support for continued momentum

Savannah River Preserve SC Acreage Protected and Acreage Projections

**SRP
Acres**

	2005	2006 IP	2006 SRP	2007 SRP	2008 SRP
Private	16,000		TNC 10,600	TNC 13,425 DU 6,829 LOLT 4,894	(projected) TNC 9,443 LOLT 4,007
State	14,500	13,200			
Federal	13,800				
Total	44,300	57,500	68,100	93,284	106,734

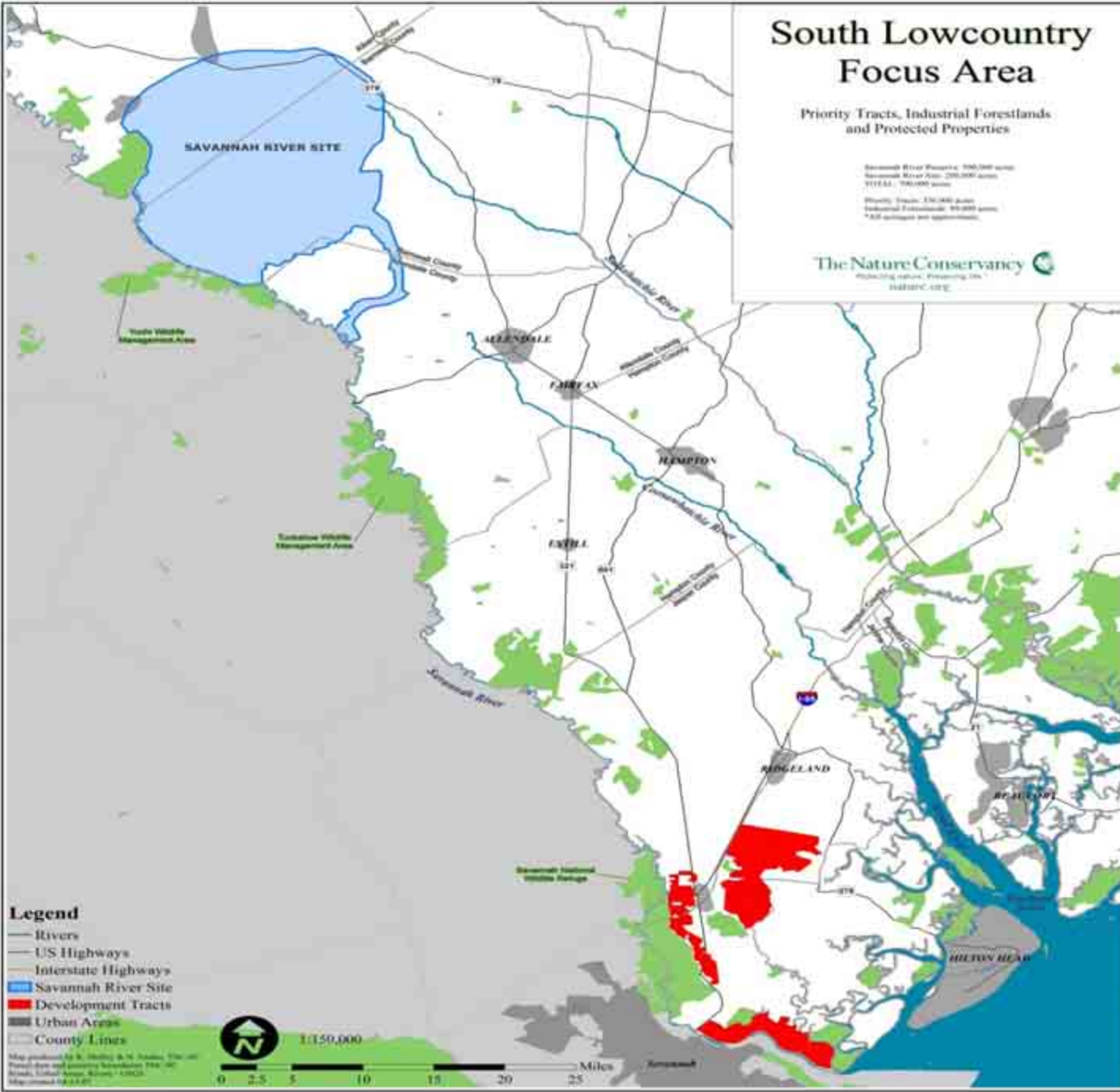
South Lowcountry Focus Area

Priority Tracts, Industrial Forestlands and Protected Properties

Savannah River Property: 590,000 acres
 Savannah River Park: 200,000 acres
 TOTAL: 790,000 acres

Priority Tracts: 120,000 acres
 Industrial Forestlands: 95,000 acres
 * All numbers are approximate.

The Nature Conservancy
 Protecting nature. Promoting life.
 TNC.ORG

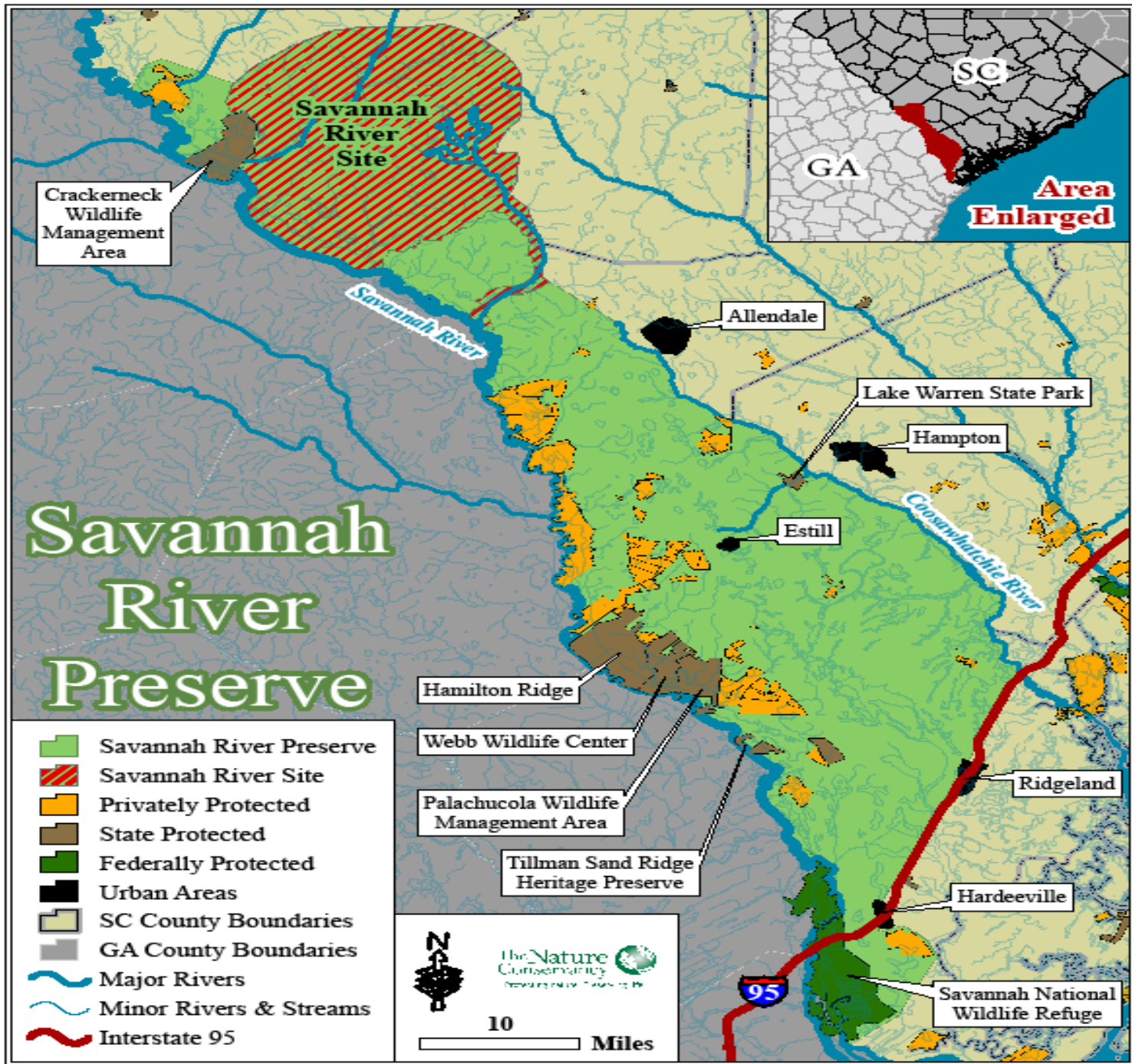


Legend

- Rivers
- US Highways
- Interstate Highways
- Savannah River Site
- Development Tracts
- Urban Areas
- - - County Lines

Map produced by R. Shelby & N. Frank, The Nature Conservancy and University of Georgia. 2004-05.
 Source: United States Bureau of Economic Analysis.
 Map compiled by TNC.







Looking towards the Future

- Additional funding sources
 - How do we capture and monetize the ecosystem services values of the program?
 - Water quality, water quantity, carbon, etc.
- Continued excitement among private landowners
- Participation of Georgia for watershed level results