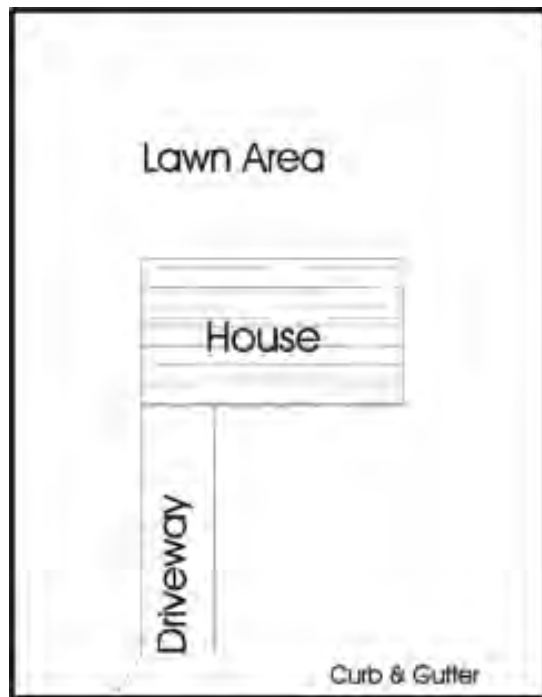


Roundtable Recommendations

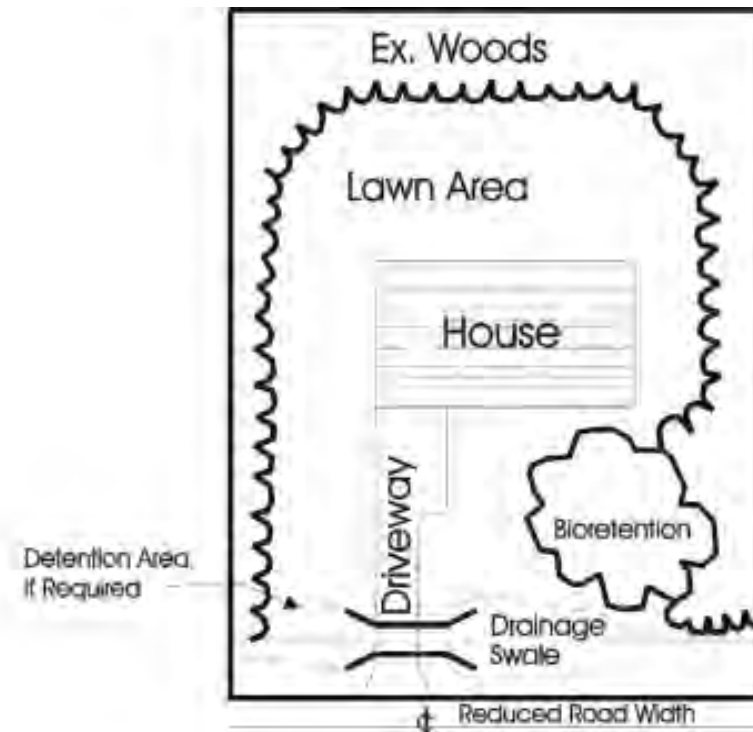
Lockwood Folly Strategies

- Land Use and Infrastructure
- Low Impact Development
- Program Coordination
- Critical Site Acquisition
- Education, Outreach, Recognition
- Living Shorelines
- Retrofit and Restoration
- Economic Incentives
- Working Waterfronts

Low Impact Development (LID) Strategy



Conventional CN
for 1-Acre Lot

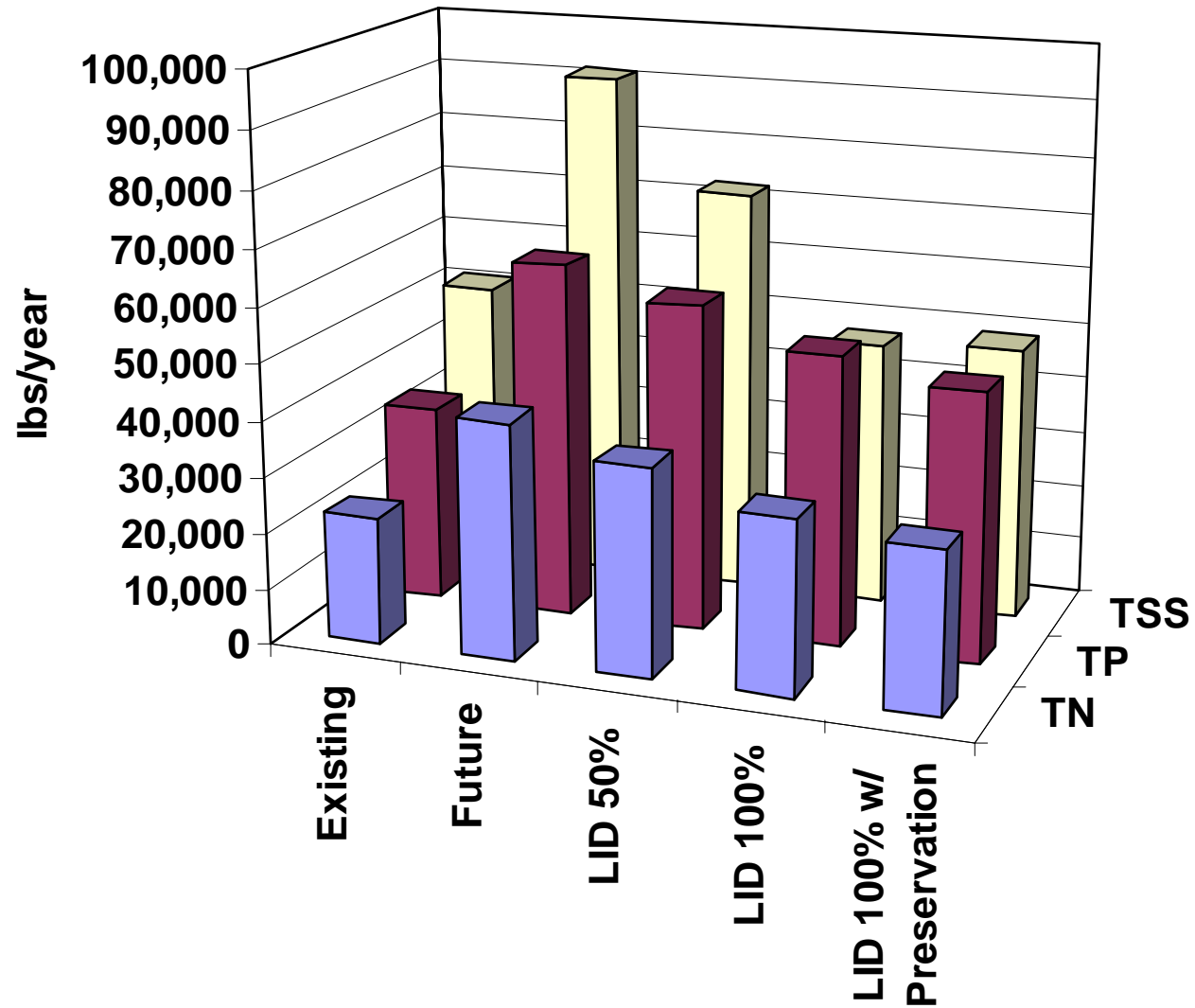


Typical Low-Impact
Development Lot

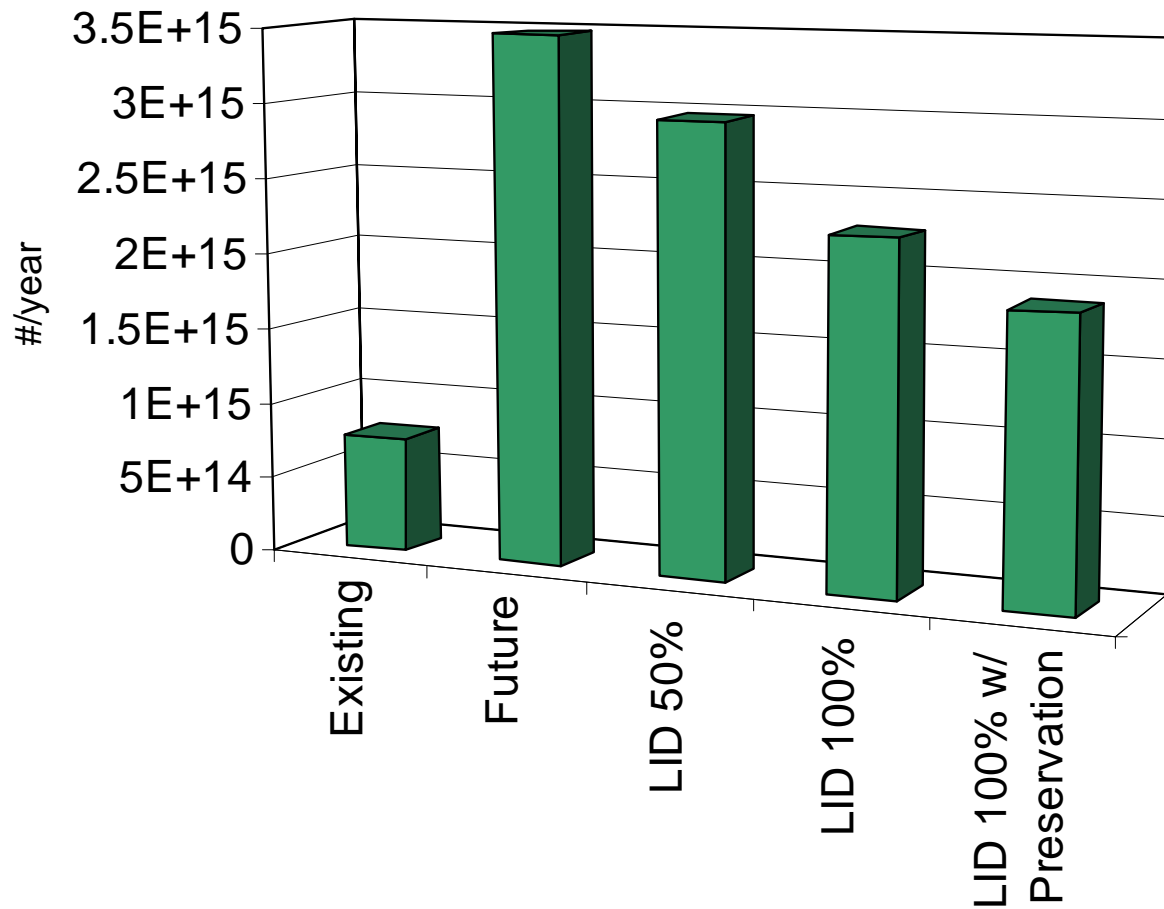
Strategy: Property Acquisition



Watershed Model - Results



Watershed Model: Alternatives



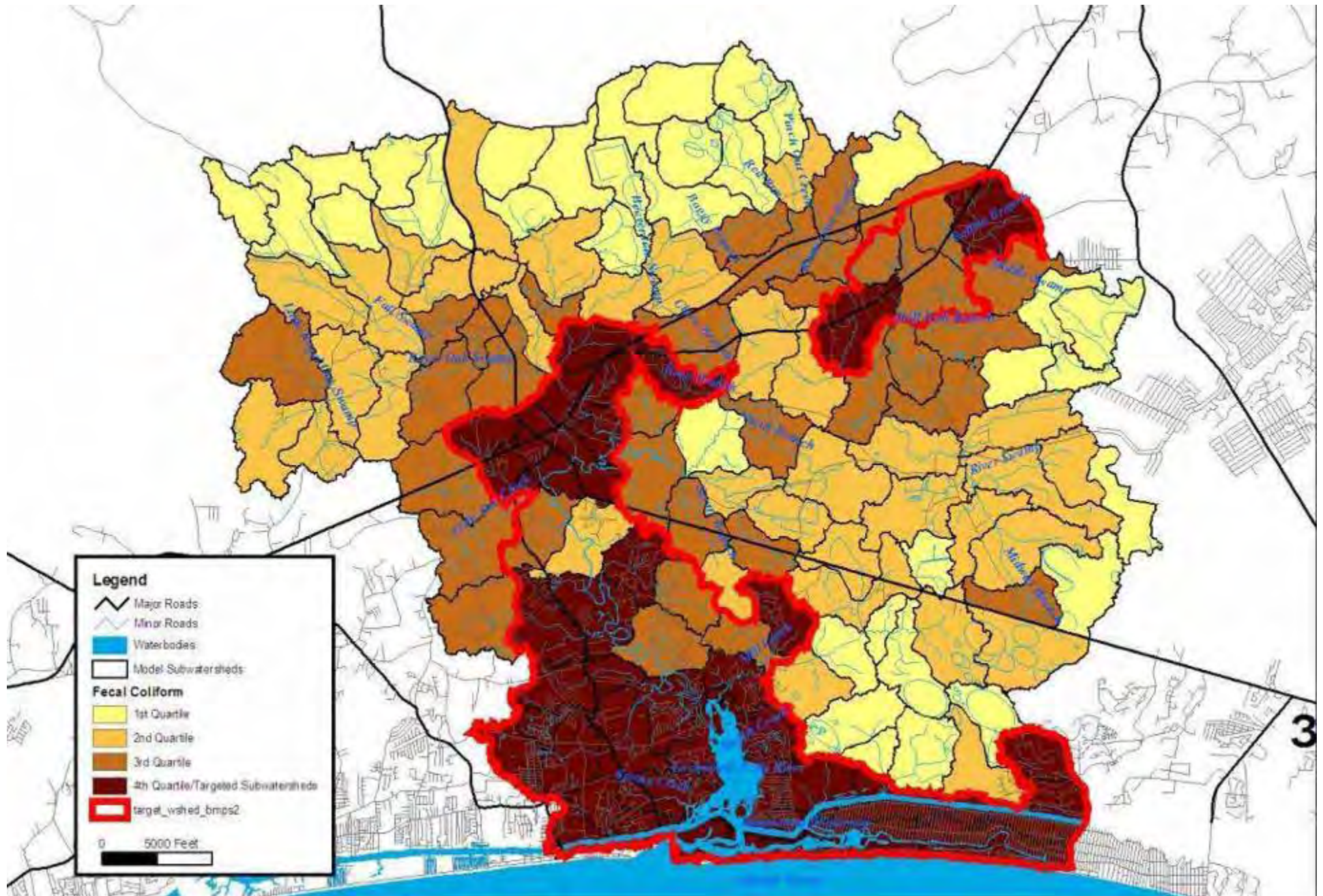
Further Reductions Achieved by:

- Applying LID to remaining new development
 - Commercial/Institutional/Industrial/Office
 - Very low density residential
 - Roadways
 - Non-residential development = 14%
- BMP retrofits to existing development
- Benefits to existing development from adjacent LID
- Buffer, stream and wetland restoration

Retrofit and Restoration Strategy



Target BMP Retrofit Subwatersheds



Bioretention Cells



Constructed Wetlands



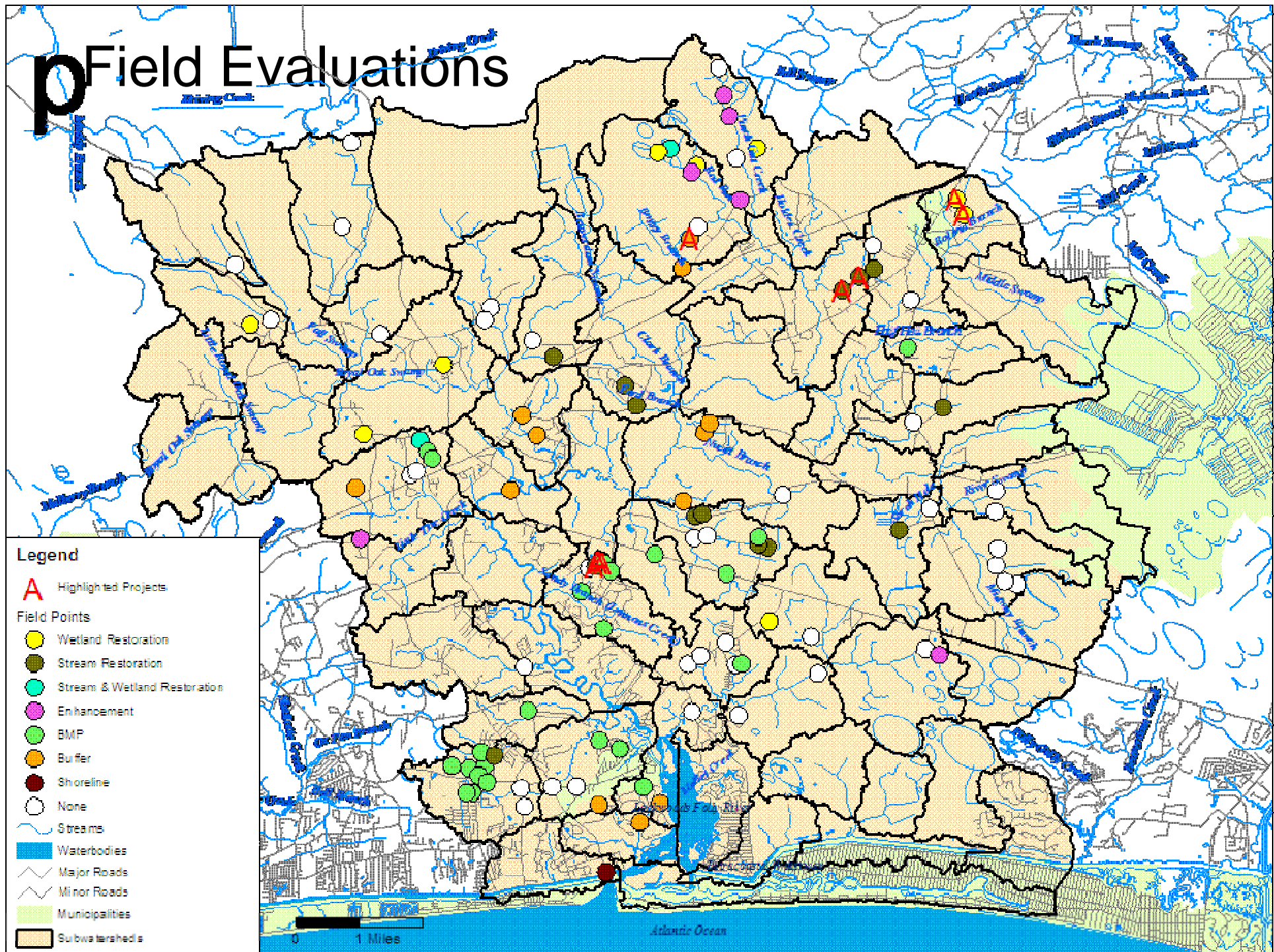
Wet Detention Ponds

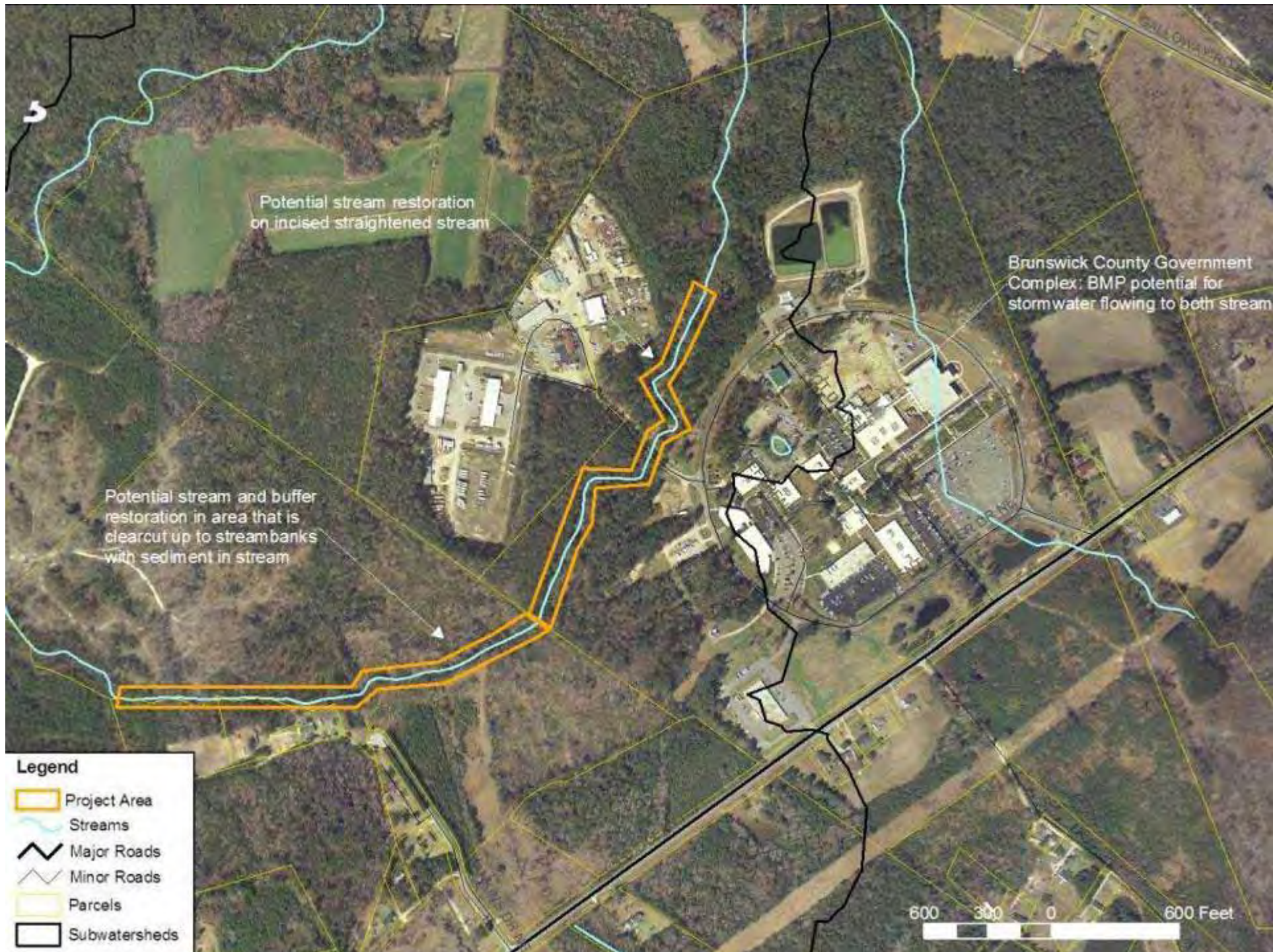


Stream & Wetland Restoration



p Field Evaluations





Questions?



Contact Information

Jason C. Doll, CPSWQ
Senior Scientist/Project Manager
Stantec Consulting

Phone: (919) 865-7375

Cell: (919) 264-1337

Fax: (919) 851-7024

E-mail: jason.doll@stantec.com

Website: www.stantec.com



Stantec