

# The Southeast Watershed Forum in cooperation with The Land Trust Alliance

## BUILDING A PARTNERSHIP FOR LAND & WATER PROTECTION

### Description:

Survey southeastern land trusts and watershed organizations to develop a map of privately-protected land and waterways that can then be compared to wildlife habitat maps, water quality maps and other resource conservation data.

### Goals:

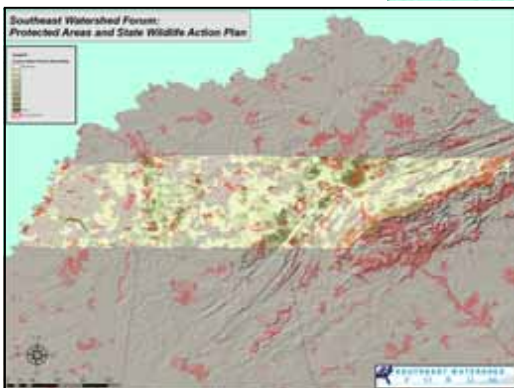
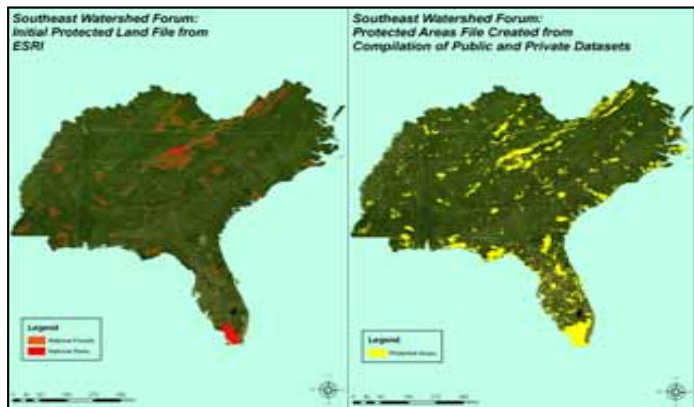
1. Encourage habitat protection & collaborative planning.
2. Encourage communities to protect habitat as part of their comprehensive planning.
3. Build public support for habitat protection & the goals of the National Fish Habitat Initiative.
4. Provide a baseline to measure protected lands over time.
5. Provide a one-stop, source of land/habitat protection data.

### Results to Date:

- Data from 70 land trusts in eight states and 36 watershed groups in nine states has been received.
- While not everyone provided total acreage, the data compiled to date reflects
  - ⇒ 227,620 acres of protected land in 8 states
  - ⇒ 726 miles of protected or restored streams in 7 states

### Project Deliverables:

- Downloadable maps at 3 spatial scales: regional, state, county & watershed
- Online database of all groups involved in land and water protection.
- Annually updated database.



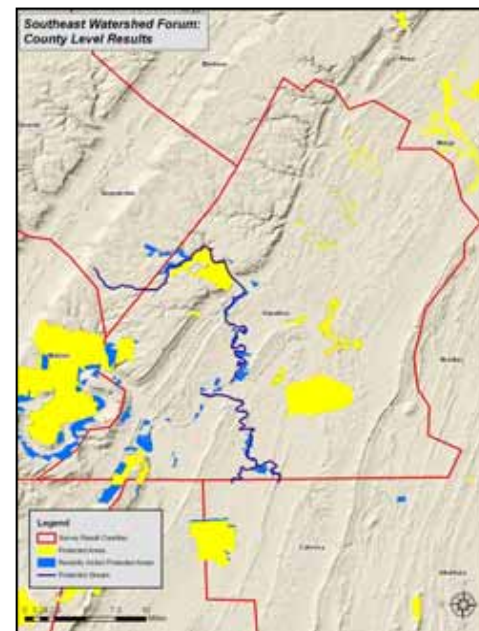
### State Wildlife Action Plan (SWAP) Overlay:

Here the Tennessee SWAP overlay is applied to the Tennessee protected lands map, creating a valuable resource for county comprehensive planning efforts, identifying areas for land acquisition and identifying future partners for habitat protection.



### Impaired Waters Overlay:

Overlaying impaired streams with the Georgia protected lands further illustrates the connection between protected land and water quality.



### Hamilton County, TN:

At the county level, the data becomes an important tool in comprehensive planning.

Project Funding From: World Wildlife Fund, Merck Family Fund, Tennessee Valley Authority & the U.S. Fish and Wildlife Service  
Project Endorsements From: SE Association of Fish & Wildlife Service and Southeast Aquatic Resource Partnership  
For Additional Information: Christine Olsenius, [co@southeastwaterforum.org](mailto:co@southeastwaterforum.org)