



FAZIO CANYONS at BARTON CREEK CLUB RESORT and SPA

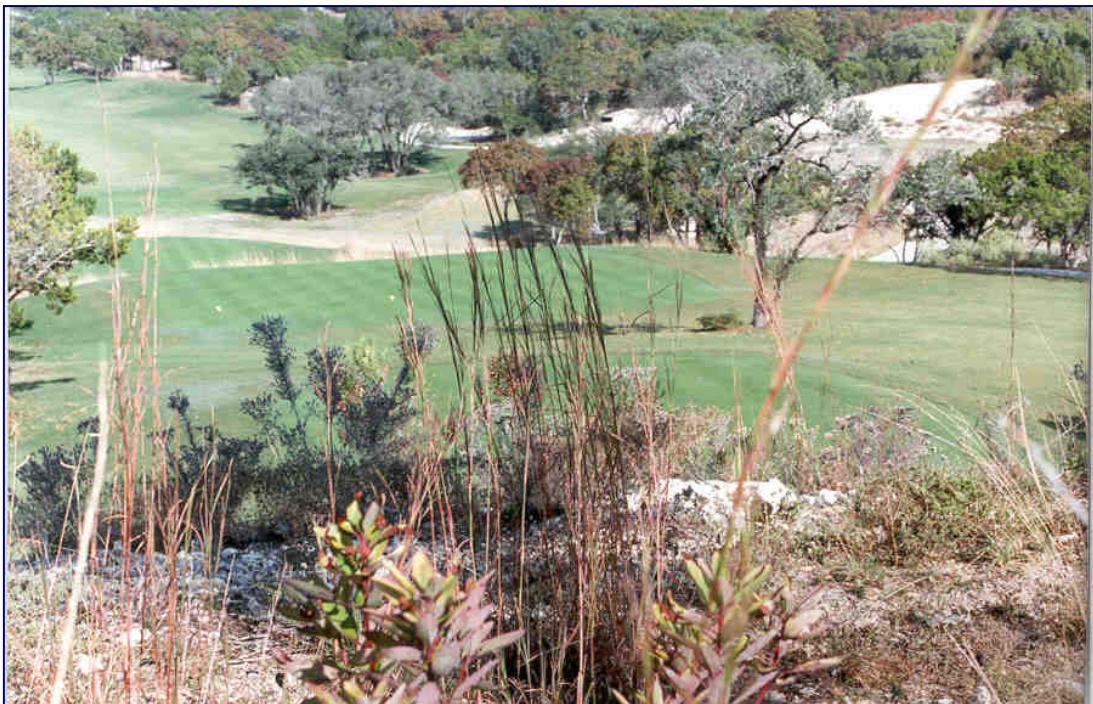
AUSTIN, TEXAS

Natural Region: Central Texas Plateau

Watershed: Juniper – Oak Savannah

The FAZIO Canyons golf course is located in Travis County, west of the city of Austin. The site is part of the Edward's Plateau, a specific geographic region also known as the "Texas Hill Country". The 7,161-yard, par 72 layout was designed by the legendary Tom Fazio. Fazio and his design team utilized the dramatics of the "hill country" to design a top notch golf course with numerous environmentally unique attributes. *Golf Magazine* (2003) named FAZIO Canyons the number one course in the state of Texas.

The 255 acre golf course site is characterized by spring fed creeks, cut rugged canyons, and oak-juniper savannahs that cover limestone hills. Small fragmented grasslands are also present. The highest elevation on site is near the Championship tee at hole number 15, with an elevation of 956 feet above sea level. The lowest elevation is in the vicinity of the green on hole number 3, with an elevation of approximately 710 feet above sea level.



15 Championship Tee